

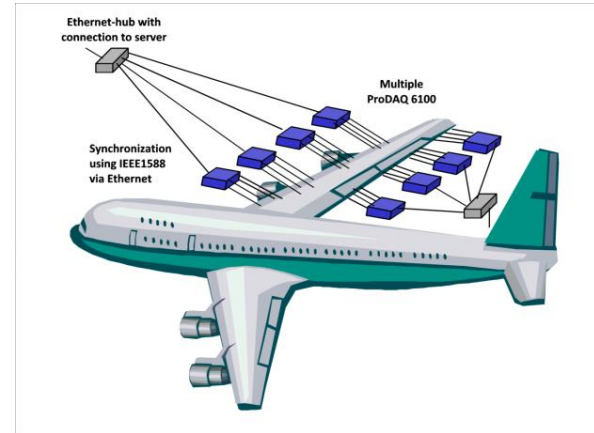
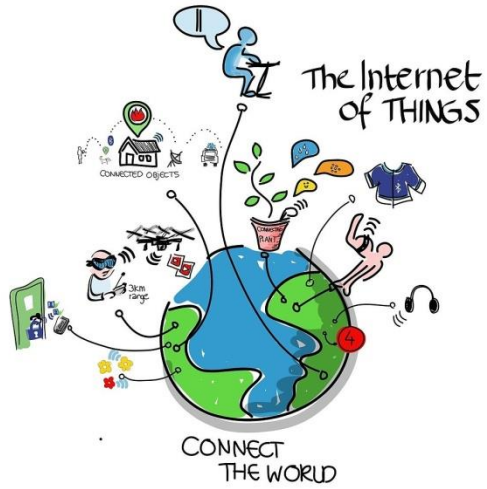
**“The Future of Test and Maintenance is distributed. What are the Consequences?”**



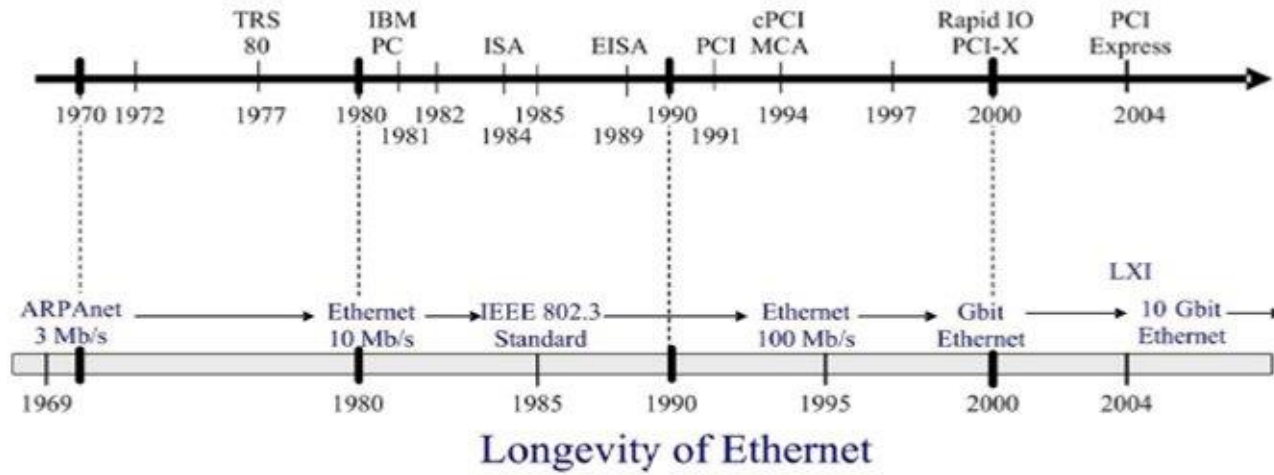
# Why

- your UUT s are more and more complex & distributed
- centralized Test approach means long cables to measurement points
- long cables destroy signal quality
- Fed-up with the life cycle of your test equipment?
- looking for lower Cost of Ownership?

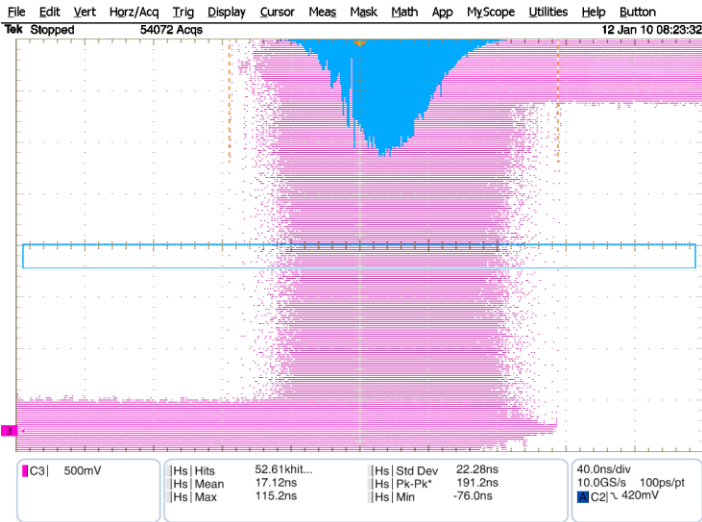
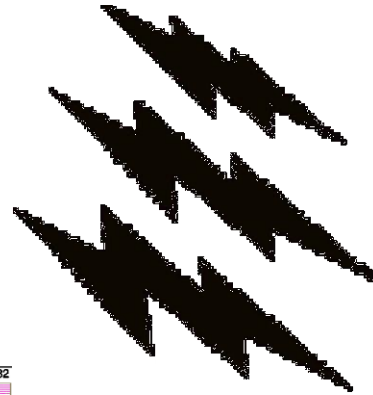
# Why



# How



# Challenges



# Advantages & Summary

- Test & Maintenance are getting more and more distributed
  - Ethernet/LXI are providing a solution for a large part of the applications
  - Clean Power not limited to PC Power lines
  - Low cost Solution
  - PC architecture independent
  - Very long Lifetime
  - all upgrades are backward compatibel
  - Lower Cost of Ownership
-